

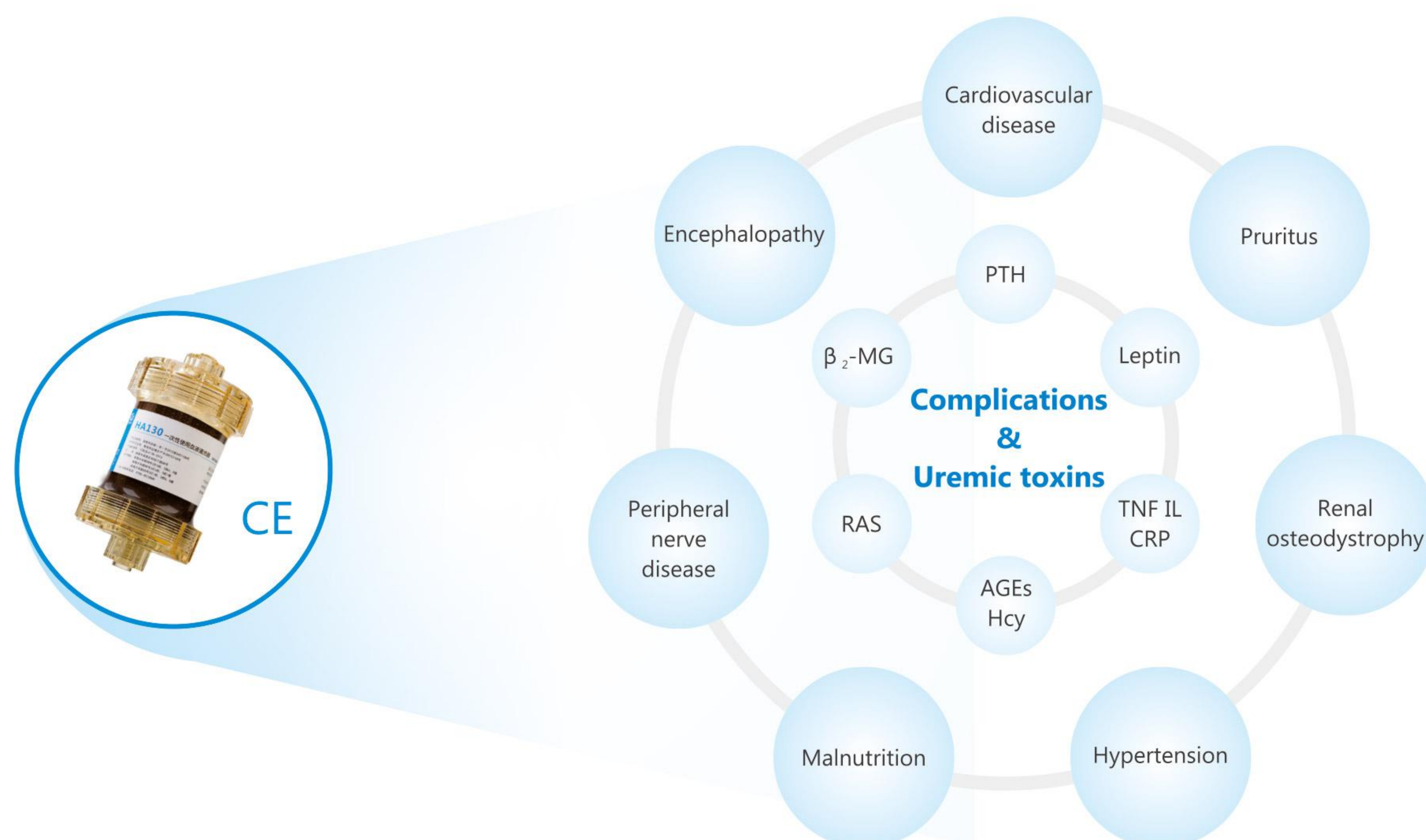
Renal Failure Disease

HA130 Disposable Hemoperfusion Cartridge (For ESRD Patients)

Combined Artificial Kidney — A Leading Blood Purification Technology

Combined Artificial Kidney is a blood purification treatment, combining hemoperfusion (HP: HA130) with hemodialysis/hemodiafiltration, to comprehensively clear uremic toxins.

- HP (HA130) can absorb middle molecular toxins and protein-bound toxins.
- HD can clear small molecular substances and excessive water.

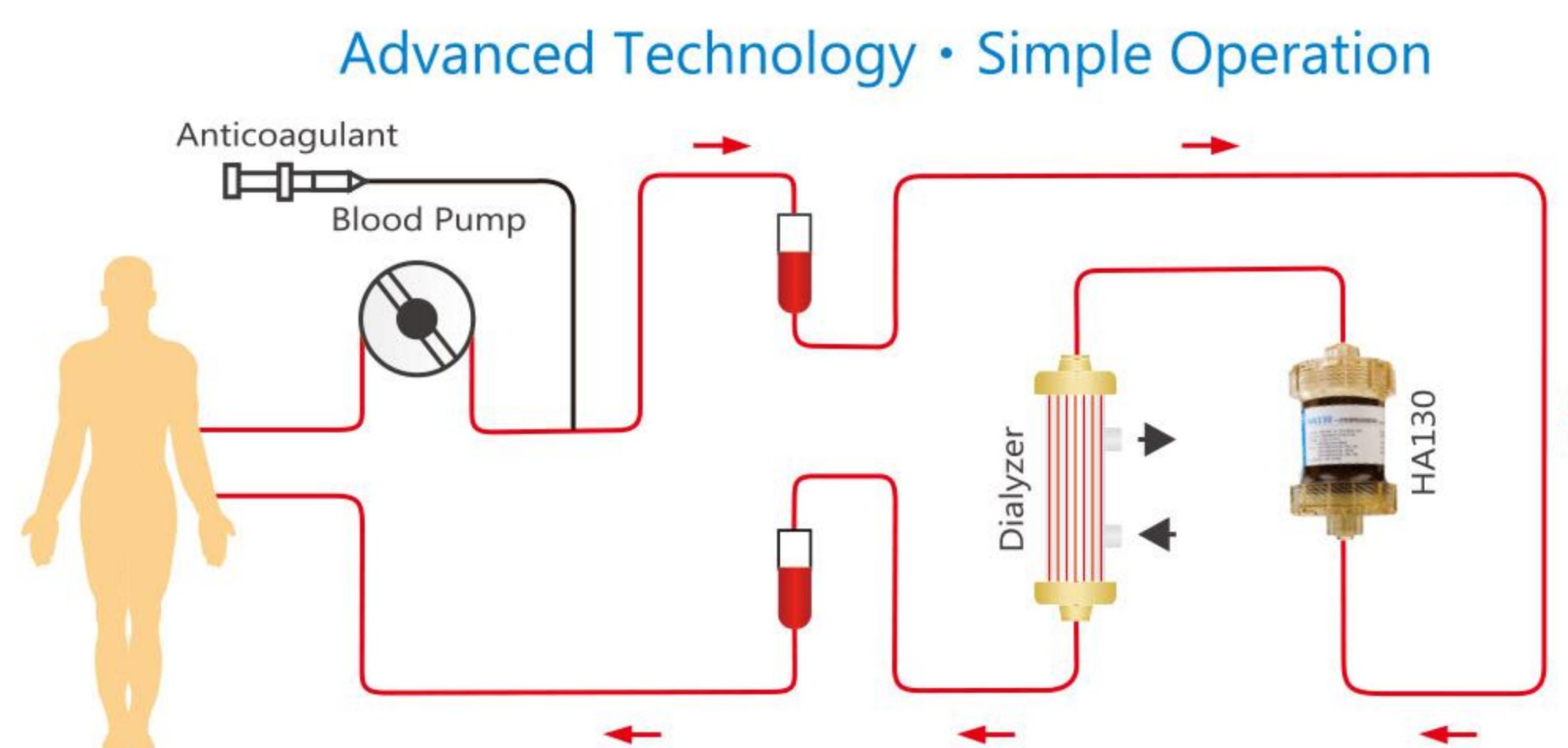


HD/HDF+HP (HA130):

- Effectively clear **middle and protein-bound uremic toxins**, relieve symptoms of the **ESRD complications**.
- **16 years'** clinical application, **85%** market share in China, application in over **3400 hospitals**, treatment for **1.5 million** ESRD patients.
- **Flexible application**. Compatible with all the blood purification machines and various blood purification therapies such as HD, HDF and CVVH.
- **Water-saving** & environment-friendly

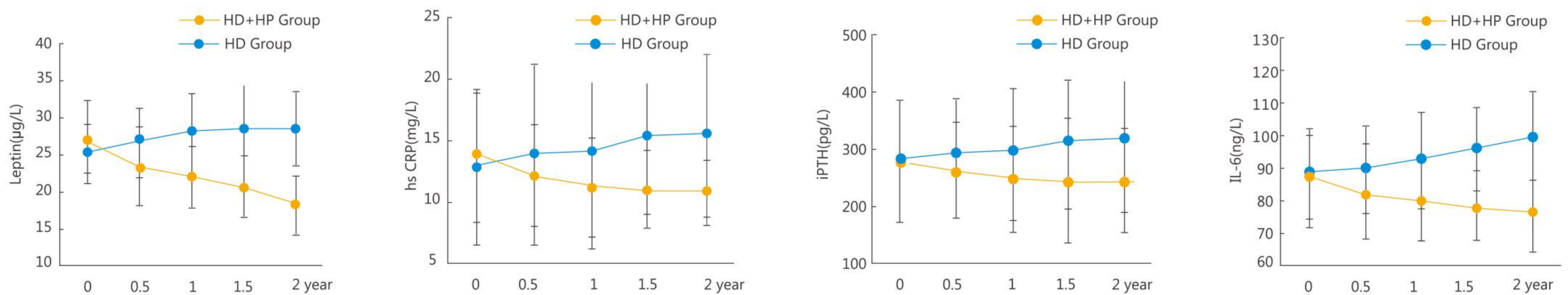
Combined Artificial Kidney: HD/HDF+HP

At present, HD/HDF+HP is the **preferred therapy** for clearance of uremic toxins in ESRD. Superior capability & Comprehensively remove uremic toxins

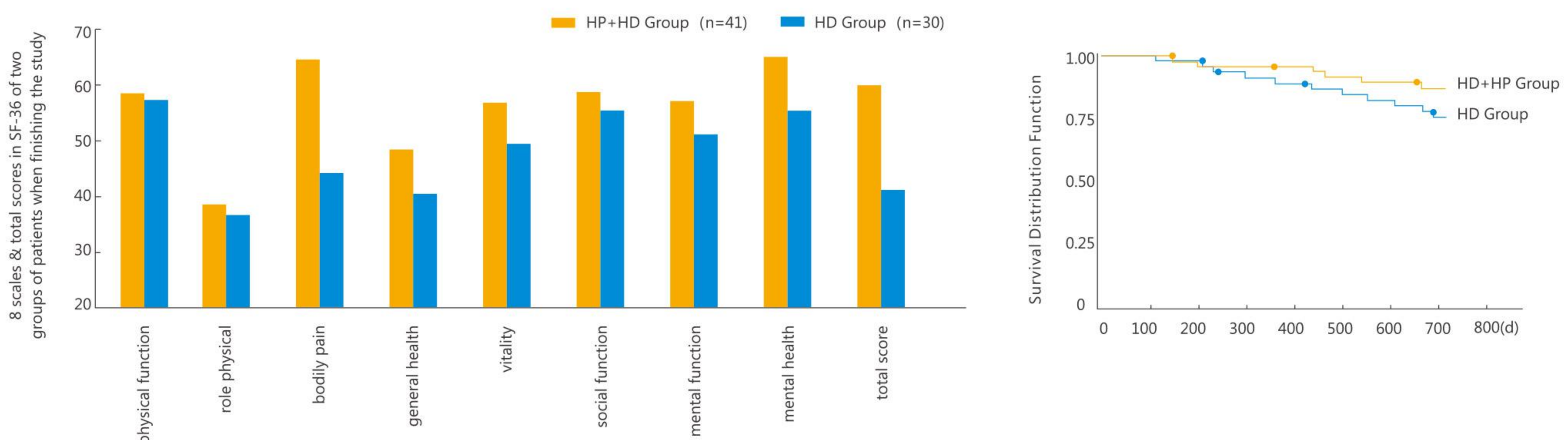


HD+HP Provides a Better Blood Purification Therapy for ESRD

● Fully clear toxins



● Improve life quality / Prolong lifespan



References: Shun-Jie Chen, Geng-Ru Jiang, Jiang-Ping Shan, et al. Combination of maintenance hemodialysis with hemoperfusion: A safe and effective model of artificial kidney. *The International Journal of Artificial Organs*, 2011, 34(4): 339-347.